

CONFER *ECS* by Forum Communications

EMERGENCY COLLABORATION SYSTEM



DEFENSE, PUBLIC SAFETY, CORPORATE SECURITY

The audio conference leader, Forum Communications, presents another industry breakthrough, the CONFER ECS, an affordable emergency response collaboration solution.

The CONFER ECS provides the latest in DSP technology, with immediate response “Crash Blast Dial” capabilities. It installs easily and provides conference management functions along with Forum’s product quality, assurance and customer care commitment.

RESPONSE MANAGEMENT

In any critical event, your specialists and management team need to connect in seconds to assess and prioritize each situation. Contingency plans can be reviewed and implemented. The ease of use and ability to drop in and out of calls allows your emergency management team to immediately respond.

Forum’s unique “**Crash Blast**” mode allows you to clear all lines for your priority calls and blast dial the response team.

Ideally suited for homeland defense, weather and natural disasters, medical response, plant safety, facility management, police, school and corporate security. The CONFER ECS is the most advanced system of its kind.

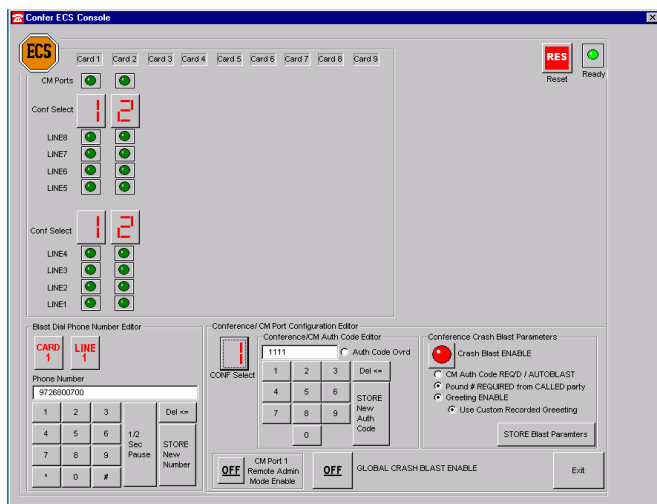
CONFERENCE MANAGEMENT FUNCTIONS

Conference management options are numerous including moderator privilege to dial out and add individuals to the call.

“Virtual Gavel” allows the moderator to mute all lines to provide immediate, uninterrupted directives. Easily toggled on/off, the moderator can use the “Virtual Gavel” to enforce command controls and then open discussion for on-going feedback.

SECURITY FEATURES

On-premise capability coupled with Auth Code, Lock, and Headcount provide you with complete control over the ECS system.



PC GRAPHICAL USER INTERFACE (GUI)

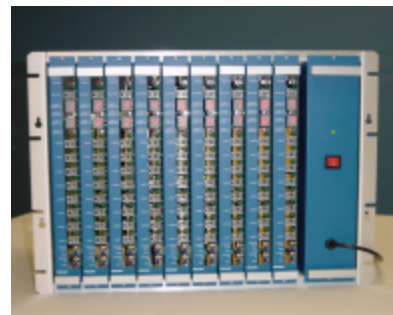
The GUI provides the means to easily configure the ECS operating parameters. These include: partitioning of conferences, blast dial phone list numbers, dial-in and CM Port Auth Codes, Crash Blast enable per conference, and Global Crash Blast Enable. In addition, Confer ECS Operation can be monitored through the GUI. LEDs show the circuit activity as well as voice activity per line.

FORUM SUPPORT

The CONFER ECS system is designed to require minimal maintenance. It will provide years of reliable service. If you need assistance, Forum’s Customer Care Department provides telephone support and remote diagnostics.

EASE OF USE

With the use of advanced DSP technology, the CONFER ECS can interface with virtually ANY PBX or KeySystem analog lines without ordering special interfaces. It’s just a matter of setting DIP switches. The DSPs also provide excellent echo cancellation, noise filtering and automatic gain control.



GROWTH CAPACITY & FUNCTIONALITY

With digital coupling, remote administration functions and 16 to 72 port capacity, participants can self mute and unmute to reduce noise in the conference. Self boost/gain for added clarity in catastrophic environments can also be implemented.

The ECS system can be divided in 4 port increments to allow you to support multiple call groups and response teams.

ENTRY/EXIT TONES...ENTRY GREETING

The CONFER ECS provides entry and exit tones so you know when a team member joins or leaves the conference. You can disable tones to minimize distractions. A customized greeting can be recorded (up to 30 seconds) to provide emergency instruction and warnings. The greetings can be customized per application and call group.

SUPERIOR SOUND QUALITY

With built-in echo cancellation, previously found only on more expensive systems, the CONFER ECS provides clear, instructional sound quality*.



TECHNICAL SPECIFICATIONS – CONFER ECS

PORT CAPACITY

16 (min) to 72 lines implemented in multiples of 8 lines/card

FEATURES

Rapid AUTOBLAST mode: (answering of CM Port without user involvement initiates blastdial)

- Answer of ringing CM port (1st ring) to start of blast dialing : < **1.6 sec**
- Total response time from CM port answer to dialout complete: **3.4 sec** (10-digit number)*
- CM Port ringback signal: std **480Hz/440Hz 2 sec on/4 sec/off -12 dBm**
- Max number of ringback cycles: **10** (ringback stops when 1st called party answers)

Auth Code Required Blast mode: (user must enter authorization code prior to blast initiation)

- Protects blast feature from unauthorized entry
- User given up to **5 seconds** to enter 4-digit authorization code + Initiate blast code
- Answer of ringing CM Port (1st ring) to start of blast dialing (after auth code) : < **6.6 sec**

Maximum number of independent CM Port-initiated blastdial conferences: 9 (full card cage)

Easy to Use GUI allows configuration of blast dial parameters

- Phone list number entry per port, auth code per conference, and blast parameters
- View port activity/voice detection activity during operation

Dialed-party conference join criteria: press # or speech detect (GUI selectable)

Global Crash Blast (reconfigures all ports to a single conference and blast dials all ports)

- GUI selectable, can be configured for Rapid Autoblast or Auth Code Required mode

Functions as Meet-Me Conference Bridge (prior to/after blast dial event)

- Cost-effective dual use as Meet-me conference bridge AND Emergency blastdial system.
- Auth code, moderator, head count, dial out, dialed party greeting (user customizable)

INTERFACE

2-wire loop-start/ground-start lines (all lines including CM Ports)

Line interface Connectors: RJ-11 jacks(card front) and 50-pin Amphenol (rear of backplane)

Recorder output jack - line level, 600 ohm, 2.5mm mono

DTMF detect: min -31dBm, 45msec. DTMF gen: -6dBm output level, 100msec on/75msec off

RS-232 interface to PC GUI (DB-9 female to DB-9 female null modem cable) < 20ft

Disconnect Supervision: Loop-current interrupt, dial tone/ reorder tone detection

POWER

115/220 VAC 50-60 hz, 130 watts max.

ENVIRONMENTAL

Operating Ambient: 5⁰ C to 50⁰ C, 10 percent RH to 80 percent RH, non-condensing

PHYSICAL

Size: 16”H x 19”W x 12”D (Wall or rack mount)

Weight: 11.5 lbs with power supply, plus 1.75 lbs per 8-port card

Capacity: Up to 9 Confer ECS Cards for up to 72 ports

* - **NOTE:** total response time and audio quality depend on external factors such as Central Office/PBX response time, network congestion, and telephone system power/wiring.



FORUM
COMMUNICATIONS INTERNATIONAL
World Leader in Audio Conference Bridges
1223 N. Glenville Drive, Richardson, TX 75081
Phone (972) 880-0700 - Fax (972) 880-2700 - www.forum-com.com

